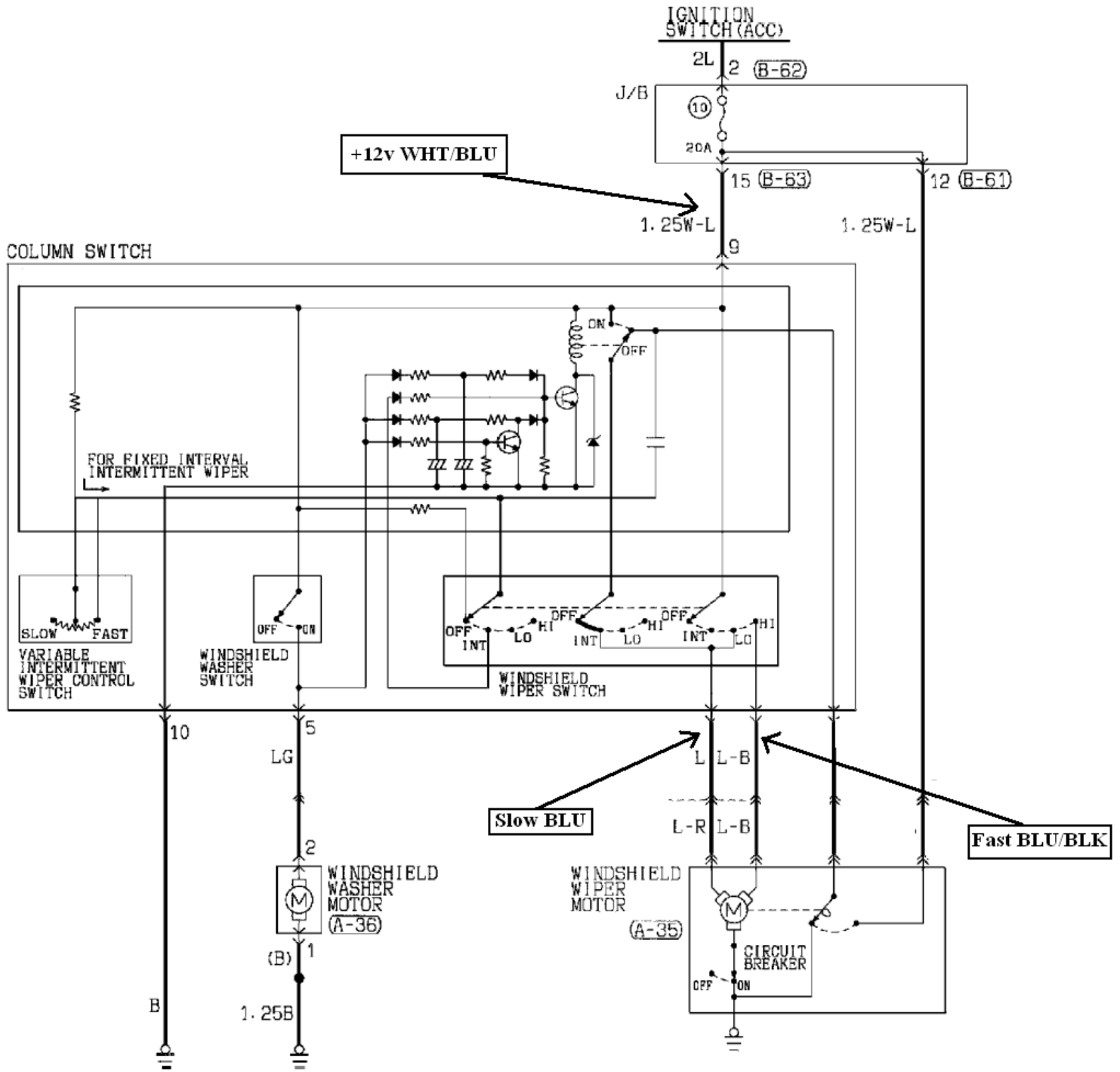


1996 Eagle Summit



HOT SIDE SWITCHING
 WIPERS RUN WHEN 12V APPLIED TO
 WIPER MOTOR SLOW OR FAST TERMINALS.
 MOTOR COMMON AT GROUND.

RainTracker™
VEHICLE INTERFACE
WIRING DIAGRAM

© 2004 OPTO-ELECTRONIC DESIGN, INC